

УДК 543.544

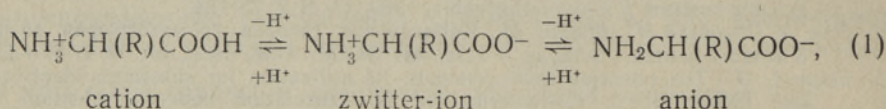
J. IVASK, J. PENTCHUK

**APPLICATION OF PHENYLALANINE AND TYROSINE
AS ELUENTS IN ION CHROMATOGRAPHY. THE SORPTION
OF THE ELUENT INGREDIENTS IN THE SUPPRESSOR COLUMN**

(Presented by J. Kann)

Recently, amino acids were used as eluents in suppressed ion chromatography (IC) [1, 2], whereas better sensitivity was achieved in comparison with the most widespread eluent, the carbonate one.

In aqueous solutions amino acids exist in different ionic forms, depending on the pH of the solution [2]:

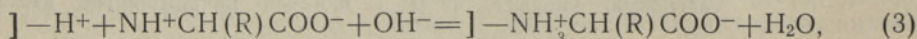
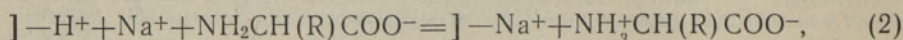


where R is a substituent. To eluate the sample anions such conditions have been chosen under which amino acid mainly exists as an anion.

The cation exchange processes in the suppressor column were interpreted in two different ways.

J. P. Ivey [1], using the Na salt of 2(N-morpholino)ethanesulphonic acid as an eluent, assumed that by passing the suppressor column the sodium ion will be replaced by hydrogen and the zwitter ionic form of the 2(N-morpholino)ethanesulphonic acid is formed. At their isoelectric point zwitter ions do not respond to the conductometric detection and the sample anions, which elute in the acid form, are detected in a low-conductivity background.

O. A. Shpigun et al. [2], using the Na salts of glycine, β -alanine, *p*-aminobenzoic acid etc. as eluents presumed that in the suppressor column the amino acid eluent is totally sorbed on the cation exchanger:



where J— is an ion-exchange site. The sample anions elute in the acid form and are detected in the background of deionized water.

Owing to the lack of unanimity in this problem, it is important to study the composition of that kind of eluent that flows out of the suppressor column.

In a previous paper of this series [3] the elution parameters of tyrosine (Tyr) and phenylalanine (Phe) eluents were studied. The aim of the present paper is to investigate the sorption processes of the amino acid eluents used in the suppressor column to clarify which ions, if any, are passing the suppressor column in various stages of its capacity exhaustion. For this purpose, IC methods were tested to determine eluent ingredients.

Experimental

The IC system consisted of the following elements: a pump at a flow rate of 1.5 ml/min, injector with a 0.1 ml sample loop, the separator and the suppressor column, a detector and a recorder.

All solutions were prepared in degassed bidistilled water and analytical grade reagents (Reakhim) were used.

For the determination of Phe and Tyr a non-suppressed IC system with a 55×4 mm I. D. separator column, packed with 0.026 mmol/g of anion-exchange resin^[4], fraction 40–63 μm, and spectrophotometric detector from a Milikhrom liquid chromatograph were used. The eluent was 0.5 mM Na₂SO₄, pH 10 (prepared by adding 0.1 M NaOH). Amino acids were detected at a wavelength of 222 nm and 0.2 AUFS.

The sodium ions were determined using the non-suppressed IC system with 150×2 mm I. D. separator column, packed with a low-capacity cation-exchange resin, synthesized at the Institute of Chemistry, Estonian Academy of Sciences, and a conductometric detector with a cell constant of 3 cm⁻¹ (293 K). The sodium ions were detected by the indirect method, using 3 mM HNO₃ as eluent.

Evaluation of the chromatograms was performed by measuring the peak heights. For the calibration plots the standard solutions with the Phe or Tyr concentration of 5, 10, 25, 50 and 100 ppm and the Na⁺ concentration of 5, 10, 20, 30 and 40 ppm were prepared.

The sorption processes in the suppressor column were studied by exhausting the cation-exchange capacity of the suppressor column. A short 60×4 mm I. D. suppressor column, packed with a high-capacity cation-exchange resin KY-2, 3 mM Phe + 4 mM NaOH eluent and a conductivity detector has been used. The eluate was collected as fractions, in which the concentration of Phe and Na⁺ was measured.

Results and discussion

To measure the eluent ingredients concentration in the eluate fractions, IC methods have been tested.

In the alkaline medium of the eluent Phe mostly exists as a single-charged anion (C₆H₅—CH₂—CH(NH₂)—COO⁻), but Tyr partly as a double-charged anion (−O—C₆H₄—CH₂—CH(NH₂)COO⁻)^[3] and has to elute slower than Phe. In the conditions used to determine amino acids the average adjusted retention time for Phe was 1.27±0.05 min and for Tyr 3.26±0.06 min (*t*₀=0.50 min, *n*=6, *P*=0.95). The relative retention time $\alpha_{\text{Phe}}^{\text{Tyr}} = 2.56$, resolution *R*=1.32 (all the values here and below were measured according to^[5]). So the separation is sufficient for the simultaneous determination of the above amino acids (Fig. 1). The efficiency (expressed by the HETP value) was 0.98 mm for Phe and 1.14 mm for Tyr.

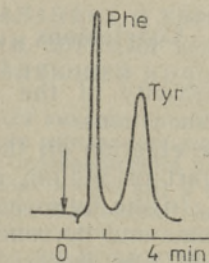


Fig. 1 The chromatogram of phenylalanine (25 ppm) and tyrosine (25 ppm) mixture.

The calibration plots for Phe, Tyr and Na^+ were linear in the range of concentrations used.

Preliminary experiment showed that by using Phe or Tyr as eluents and a freshly regenerated suppressor column, no amino acid could be detected in the eluate. The eluation with the Phe + NaOH eluent (Phe was chosen for its better solubility than Tyr to accelerate the suppressor column capacity exhaustion, using the concentrated eluent) was continued until the base line on the chromatogram began to rise quickly (Fig. 2).

The effect of the eluate volume on its composition was determined by plotting the average concentration of Phe (C_{Phe}) and Na^+ ions (C_{Na^+}) in the eluate fraction *v. s.* the total volume of the eluate (*V*) (Fig. 3). The results showed that Phe was completely sorbed on the resin KY-2 in the first stage of the eluation process. Further eluation showed Phe to appear in the eluate and its concentration began to increase. The sodium ions were passing through the suppressor column already in the first stage of eluation (C_{Na^+} approx. 1 ppm). When Phe appeared in the eluate, the concentration of Na ions decreased below the detection limit. During further eluation Na^+ ions appeared in the eluate and their concentration began to increase.

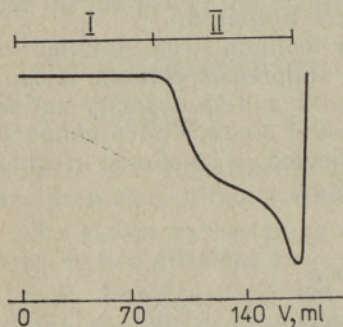


Fig. 2. Base line at the suppressor column cation-exchange capacity exhaustion.

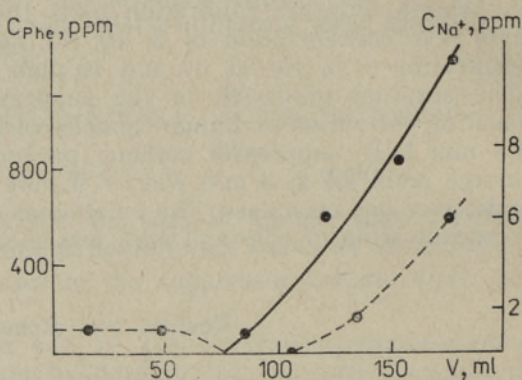


Fig. 3. The effect of the eluate volume on its composition (— Phe, — Na^+).

The results showed that under the conditions used the detection of anions could not be carried out in the background of the deionized water. That was also proved by the existence of a negative peak when bidistilled water was injected into the IC system as a sample. For quantitative analysis of anions only the first stage of eluation was suitable (Fig. 2, segment I) as the eluate composition ($1 \text{ ppm Na}^+ \approx 0.05 \text{ mM NaOH}$) was constant and hence the background conductivity.

Conclusions

1. The background conductivity of the eluate changed during the eluation with the phenylalanine eluent.
2. In the first stage of the eluation all the amino acid was sorbed in the suppressor column, but part of sodium ions passed through it (the concentration approx. 1 ppm). In the following stage of the eluation phenylalanine appeared in the eluate and its concentration began to increase, but the concentration of sodium ions decreased below the detection limit. By continuing the eluation, the sodium ions again appeared in the eluate and their concentration began to increase.

3. The quantitative determination of anions was possible in the first stage of elution because the background conductivity was constant only there.

4. In the eluate, phenylalanine and tyrosine were determined by non-suppressed anion chromatography, using a spectrophotometric detector. The same method, but using a cationic separator column and a conductivity detector was applied to the determination of sodium ions.

REFERENCES

1. Ivey, J. P. Zwitter ionic eluents for suppressed ion chromatography // *J. Chromatogr.*, 1984, **287**, 128—132.
2. Shpigun, O. A., Voloshik, I. N., Zolotov, Yu. A. Application of amino acids as eluents in ion chromatography // *Anal. Sci.*, 1985, **1**, 335—339.
3. Ivask, J., Pentchuk, J. Application of phenylalanine and tyrosine as eluents in ion chromatography. The effect of eluent concentration and pH on the retention time of inorganic anions // *Proc. Acad. Sci. ESSR. Chem.*, 1989, **38**, N 2, 125—129.
4. Haldna, O., Palvadre, R., Pentchuk, J., Kleemeier, T. Preparation of low-capacity anion-exchange resin for ion chromatography on a methacrylic copolymer matrix // *J. Chromatogr.*, 1985, **350**, 296—298.
5. Snyder, L. R., Kirkland, J. J. *Introduction to Modern Liquid Chromatography*. New York, Chichester et al., 1979, 22—34.

*Academy of Sciences of the Estonian SSR,
Institute of Geology*

Received
Jan. 25, 1989

Tartu Sanitation and Hygiene Station

J. IVASK, J. PENTSUK

ФЕНОÜЛАЛАНИИНИ JA ТЮРОСИИНИ KАСУТАМИНЕ ЕЛУЕНДИНА ИОНKРОМАТОГРААФИАС. ЕЛУЕНДИ КООСТИСОСАДЕ СОРБЕЕРУМИНЕ СУПРЕССОРКОЛОНИС

Uuriti aminohappelise eluendi сорпсioonипrotsesse kationiidil KV-2 ning eluendi komponentide ионкроматографилise analüüsi võimalusi. Fenüülalaniini ja türosiini lahutamiseks ja määramiseks on rakendatav ионкроматография ühekolonniline meetod, kasutades spektrofotomeetrilist detektorit ($\lambda = 222$ nm) ja 0,5 mM sulfaatset eluenti. Naatriumioonide määramiseks sobib ионкроматография ühekolonniline meetod koos kaudse konдуктomeetrilise detekteerimise ning 3 mM lämmastikhappelise eluendiga. Tingimustel, mis kõlbavad anorgaaniliste anioonide kvantitatiivseks analüüsiks, sorbeerub супрессорколони kogu aminohape, kuid osa eluendi vajaliku pH saavutamiseks lisatud NaOH-st läbib супрессорколони sorbeerumata ja anioonid detekteeritakse väikese kontsentratsiooniga (ca 0,05 mM) NaOH lahuse foonil.

Ю. ИВАСК, Я. ПЕНЧУК

ИСПОЛЬЗОВАНИЕ ФЕНИЛАЛАНИНА И ТИРОЗИНА КАК ЭЛЮЕНТА В ИОННОЙ ХРОМАТОГРАФИИ. СОРБЦИЯ КОМПОНЕНТОВ ЭЛЮЕНТА В ПОДАВЛЯЮЩЕЙ КОЛОНКЕ

Подвергнуты исследованию сорбция аминокислотного элюента на катионите KV-2 и возможности ионохроматографического определения компонентов элюента. Определение фенилаланина и тирозина проведено одноклоночным вариантом ионной хроматографии со спектрофотометрическим детектором ($\lambda = 222$ nm) и использованием 0,5 mM сульфатного элюента. Натрий-ионы определены с помощью одноклоночного варианта ионной хроматографии с косвенным кондуктometрическим детектированием. В качестве элюента применено 3 mM HNO₃. Найдено, что в условиях, пригодных для количественного определения неорганических анионов, в подавляющей колонке сорбируется вся аминокислота, но часть гидроксида натрия, добавленная для достижения нужной pH элюента, проходит в подавляющую колонку. Следовательно, анионы детектируются на фоне разбавленного (0,05 mM) раствора NaOH.